

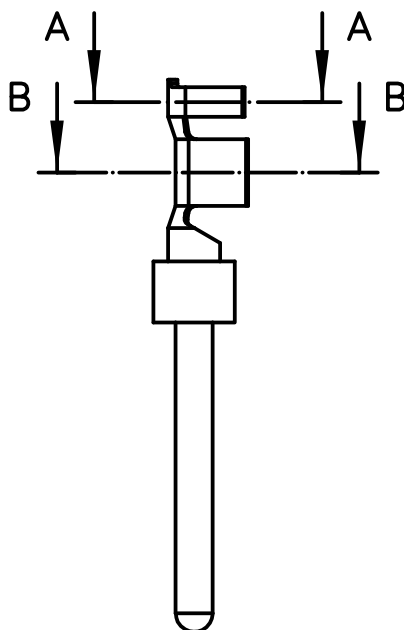
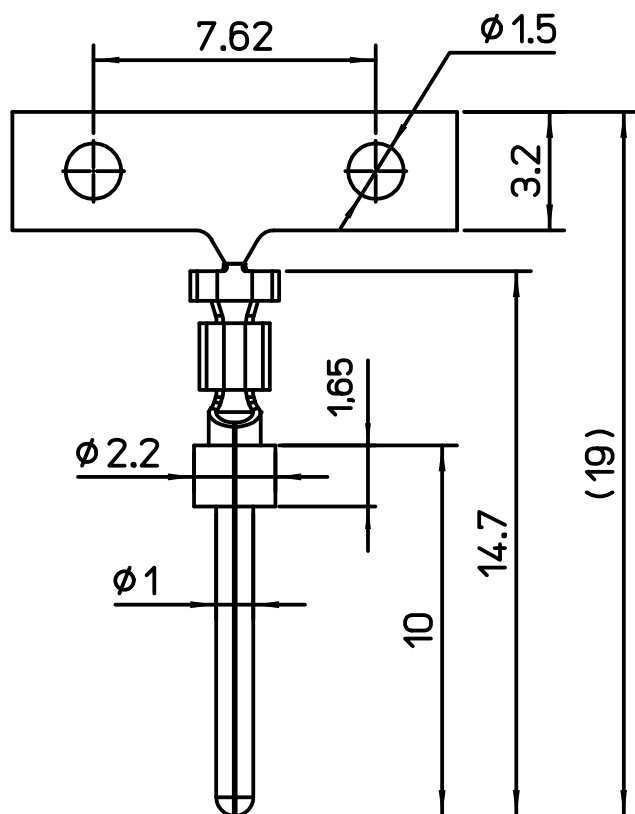
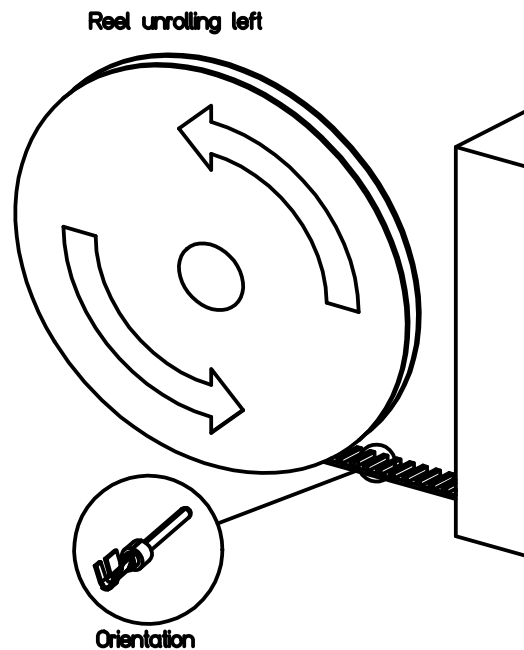
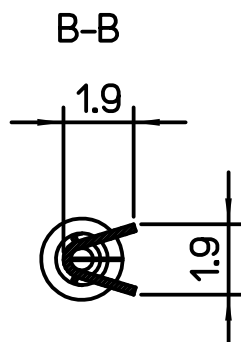
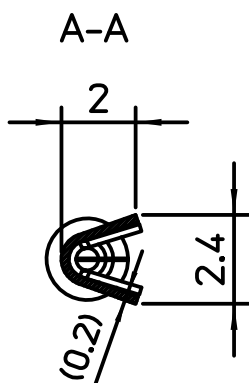
Diritti riservati

All rights reserved

A



B

C



ILME CODE	PERFORMANCE LEVEL
SIM1D 0.5R	PL1
SIM2D 0.5R	PL2
SIM3D 0.5R	PL3

-Selective Gold plating over Nickel in the contact area, tin plating in the crimp area, RoHS conform
-Material: brass (leadfree)
-Reel of 10000 contacts

REV	DATA	FIRMA	
<div><div><div>Dimensions in mm</div></div><div>Simplified representation with dimensions without tolerance</div></div>			
Original Size A4			<div>Scale</div> <div>5:1</div> <div></div>
Date 29/10/19			
Sign. Pitasi			
SIMxD 0.5R			
Stamped male crimp contacts 5A 0.22-0.56mm , 20-24 AWG.			